

USER MANUAL
TWS - IN EARPHONES



Model No.:

EP-TWS10

PLEASE READ ALL INSTRUCTIONS CAREFULLY
AND RETAIN FOR FUTURE USE

Table of Contents:

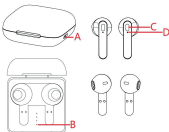
- 1) Package contents
- 2) Location of control buttons
- 3) Safety instructions
- 4) Using the TWS in earphones
- 5) Features and specifications

1) Package contents


1. TWS – in earphones
2. User manual

2) Location of control buttons

- A. Type-C port
- B. LED indicator on charging box/dock
- C. Touch Button
- D. Microphone/LED indicator




3) Explanation of the symbols

 **Warning!**
Risk of electric shock and for potential risk of death and or serious irreversible injury!

 **Safety Warning!**
It requires special attention to read and follow the instructions, otherwise a potential hazard, injury, death, or serious condition may happen.

 **CE marking**
Indicates that the product sold in Europe has been assessed to meet high safety, health, and environmental protection requirements.

 **Wheellie Bin (WEEE)**
Instructions for protecting the environment
(Waste Electrical & Electronic Equipment directive)

 **Warnings!**
To prevent possible hearing damage, do not listen at high volume levels for long periods. Prior to use, turn the volume control to its lowest level. Turn on the audio/music player and put the earphones on. Adjust the volume control slowly to a comfortable level

 **Warning!**
To avoid the danger of suffocation, keep the plastic bag away from babies and children.

Read the instructions



Read the instructions for use carefully and keep them safe. If you give this device to other people, please also pass on this manual.

4) SAFETY INSTRUCTIONS & WARNINGS:



Before using the TWS earphones, the following basic precautions must always be taken:

General Safety information and instructions

- Carefully read the instructions for use and store them in a safe location. If you give this device to other people, please also pass this manual.
- Only use this device in accordance with instructions in this instruction manual. Failing in following up the instructions, may result in electric shocks, fire and or serious injury.
- The device is intended for domestic and private use only and its intended purpose only. The device is not advised for commercial use.
- Improper use of the device could damage the product.
- The appliance is not a toy and can be used by children aged from 8 years and above and persons with reduced physical, sensory or mental capabilities, or lack of experience and knowledge, if they have been given supervision and or instruction concerning use of the appliance and the possible dangers of misuse of the device.
- Keep the device out of reach of children and pets.
- **WARNING!** Do not leave packaging material lying around carelessly. This may become dangerous playing material for children and result in f.e. Risk of Suffocation!
- Prior to use, check the device for visible and external damage.
- Do not expose the device to direct sunlight, any heat sources, excessive humidity, or corrosive environments.
- The guarantee will expire immediately if the device is damaged as a result of not observing this user manual. The manufacturer accepts no liability for damage caused by non-compliance with the instruction manual, negligent use or use which does not comply with the conditions of this instruction manual.



WARNINGS AND INSTRUCTIONS

- Do not use the device if it has fallen into water or any other fluid; if liquid has been spilled or if it has been exposed to rain or moisture.
- **WARNING!** To reduce the risk of fire or electric shock, protect the device against dripping or splashing water, and keep it away from objects filled with liquids. Such objects should not be placed on or near the device.
- Do not use the device if there are visible signs of damage.
- Do not attempt to disassemble or repair the device or modify it in any manner.



**BATTERIES, ELECTRICITY & HEAT**

- The battery of the charging box/dock should be charged for approximately 1.5 hours before using the device for the first time.
- Never leave the device to charge unattended.
- Do not use the device if it has a damaged charging cable, if it has become faulty, or if it has fallen or become damaged in any way.
- Ensure the device and charging cable do not encounter heat sources, such as hotplates or naked flames.
- Remove the charger cable from the device once charging has been completed.
- To reduce or prevent the risk of personal injury, electrical shock, fire, or damage to the device, never insert metal or objects in any opening of the charging port or charging contacts of the charging box/dock.



- The rechargeable batteries are built into the device and cannot be replaced.

• **WARNING!** Do not open the casing as this may result in electric shock!

• Do not expose the device to excessive heat sources like fire or direct sunlight.

• Do not crush, puncture, or dismantle the device; this might damage the battery.

• **WARNING!** Damaging the casing and/or piercing the device, can lead to explosion or fire!

• Leaks from battery cells can occur under extreme conditions.

If the liquid gets on the skin, wash it immediately with soap and water. If the liquid gets into the eyes, flush them immediately with clean water for a minimum of 10 minutes and seek medical attention.

• **WARNING!** Do not throw the device into fire because it may explode!

**CLEANING**

- Before cleaning the device, always disconnect the device from charging cable.
- Do not use abrasive cleaning solvents to clean the device.
- Clean the exterior of the device with a damp cloth.

5) USING THE TWS**Charging the charging box/dock:**

- Plug the type-C connector of the charging cable into the charging port of the device.
- Plug the USB connector of the charging cable into a USB port of your charger.
- The LED indicator on charging box/dock will flash from the first to the last LED when the device is charging.
- Once charging is completed, the 4 LEDs of the LED indicators will light up together and the device will stop charging.

- Unplug the charging cable from the device, which is now ready for use.
- If the battery level runs low, the last LED start flashing, indicating the battery needs to be recharged.
- A fully charged charging dock can charge the earphones for 4 cycles.

Charging the TWS earphones:

- Put the earphones into the charging dock. The charging ports will make contact automatically and the earphones will start charging.
- When charging, the LED indicators on earphones turns into red colour. When batteries are fully charged, the LED indicators turns off.

Power ON/OFF the TWS Earphones:

- Once the earphones are taken out of the charging dock, they will automatically power ON.
- When the earphones do not have BT connection for 3 minutes, they 1 will automatically switch OFF.
- The earphones can be powered ON again by putting them back in the charging dock and taking them out the dock again.
- Once powered ON, the LED indicator on earphones will flash blue/red alternately, this means the TWS earbuds are in pairing mode with the Mobile device.
- If the TWS in Earphones has been paired before, it will automatically connect to the smartphone/tablet and the LED indicator will turn off after 3 seconds.
- To power OFF the earphones, put them back in the charging box/dock.

Making a BT connection (BT pairing)

- Take the earphones out of the charging dock, they will power ON automatically.
- LED indicator on the earphones will start flashing blue/red. The TWS earphones are now in pairing mode.
- The two earphones will pair automatically with each other. Once they are paired, the LED indicator of one earphone, will switch OFF, while the other will continue to flash blue/red alternately.
- Keep the TWS and your Mobile phone or Device close to each other (within 1 meter (3ft) during BT pairing process.
- Turn on the BT function of your Mobile phone or Device, and search for the TWS earphones.
- When you find the TWS earphones, select "GreenMouse" from the list of found devices.
- Two beeps will sound to indicate successful pairing. The indicator on earphone will switch OFF.
- If a paired Mobile phone or Device is in the range, the TWS will connect automatically when it's detected.
- When the earphones do not have a BT connection for 3 minutes, they will automatically switch OFF.

- They can be powered ON again by simply putting them back in the charging dock.

NOTE!

If you would like to connect the TWS earphones to another Mobile phone or Device, you must first disconnect it from the active paired Mobile phone or Device BT connection. You can also simply switch off the BT function.

Listen to music:

If you want to play back music from your Mobile phone or Device, open your media player and press play. Control the volume up/down on your Mobile phone or Device.

You can also control the media player and volume up/down by TWS:

Operation	Key Description
Play music	Press left/right earbud touch button once
Pause music	Press left/right earbud touch button once
Increase volume	Press right earbud touch button twice
Decrease volume	Press left earbud touch button twice
Play next track of music	Press right earbud touch button three times
Play previous track of music	Press left earbud touch button three times
Siri/Google Assistant, etc	Long press left/right earbud touch button for 2 seconds

Answering a call:

If there is incoming call, press short the touch button of left or right earbud once, to pick up the call. You can also pick up the call on your phone, and it will automatically connect to TWS earphones. If you were listening to music, the music will stop playing when receiving an incoming call.

Ending a call:

If you want to end an ongoing call, short press the touch button of left or right earbud twice to end the call or press the "call end button" on your mobile phone. If you were listening to music before you started the call, the music will automatically resume playing from the track where you end the call.

Reject a call:

If you would like to reject an incoming call, long press the touch button of left or right earbud for 2 seconds.

6) FEATURES AND SPECIFICATIONS:

- Driver diameter: \emptyset 13 mm
- Speaker impedance: 32 Ω
- Frequency response: 20Hz~20kHz
- Speaker sensitivity: 95dB +/-3dB
- BT V5.3
- Operating frequency: 2402 – 2480 MHz
- Transmission power: 0.25mW
- Operation distance: up to 10m
- BT profiles: A2DP, HSP, HFP VAVRCP, SPP
- Charging input: 5Vdc/1A
- Built in rechargeable battery for earphone:
Li ion 3.7Vdc \approx 25mAh 0.0925Wh
- Built in rechargeable battery for charging dock:
Li ion 3.7Vdc \approx 300mAh 1.11Wh
- Support 4 cycles of charging the earbuds
- Playing time: up to 12 hrs (4 cycles x 3 hrs)
- Charging time for earbuds: about 1 hr
- Charging time for box/dock: 1-1.5 hrs
- Integrated omni directional microphone
- Weight: 40 grams

All contents and specifications mentioned in this manual are subject to change without prior notice.

INSTRUCTIONS FOR PROTECTING THE ENVIRONMENT

(WEEE, the waste electrical and electronic equipment directive)



Your product has been manufactured using high quality materials and components which can be recycled and used again. At the end of its life span, this product cannot be disposed of in normal domestic waste, but must be taken to a special collection point for recycling electrical and electronic equipment. This is indicated in the user manual and in the packaging by the waste container marked with a cross symbol. Used raw materials are suitable for recycling.

By recycling used appliances or raw materials, you are playing an important role in protecting our environment. You can ask your local council about the location of your nearest collection point.

EU DECLARATION OF CONFORMITY

We,

GreenMouse Int. BV ,PO.Box 30047/8003CA, Zwolle/ The Netherlands

Declare under our sole responsibility that the product:

- Product Brand: GreenMouse Int. BV
- Product Model No: 46956679
- Product Description: TWS BT in Earphones
- Operating Frequency: 2402MHz to 2480MHz
- Transmitted Power: 0.25mW
- Battery (Earphones): 25mAh, 0.0925Wh
- Battery (Charging case): 300mAh, 1.11Wh
- Input Rating: 5V $\overline{=}$, 1A, IPX0

Following the provisions of the Directives:

- Radio Equipment Directive (RED): 2014/53/EU
- Restriction of the use of certain Hazardous Substances in Electrical and Electronic Equipment Directive (RoHS): 2015/863amending 2011/65/EU

And standards to which Conformity is declared:

RED:

- EN 55032:2015/A11:2020
- EN 55035:2017/A11:2020
- ETSI EN 300 328 V2.2.2(2019-07)
- ETSI EN 301 489-1 V2.2.3(2019-11)
- ETSI EN 301 489-17 V3.2.4(2020-09)
- EN 62479:2010 & EN 50663:2017
- EN IEC 62368-1:2020+A11:2020

Place: The Netherlands

Date of issue:12-12-2021

The latest version of the DOC can be found on:
<https://www.Greenmouse.green/DOC-46956679>